

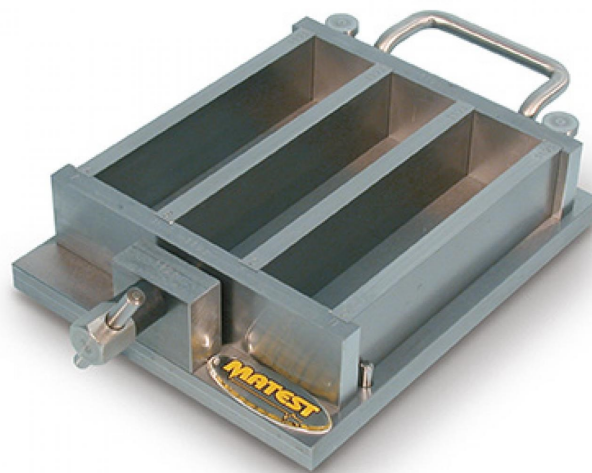
E102 : Three gang mould

STANDARDS : EN 196-1, EN ISO 679

Three gang mould for 40.1x40x160 mm prisms.

Manufactured from steel with hardness of inside walls over HV 200, it meets the dimensional tolerances to EN 196/1 Standard. All surfaces are grinded and all parts are marked with an identification number for a correct assembling. A part-number is engraved on each mould and a Certificate of Conformity is supplied along with.

Weight : 8560 g.



E102

Accessories :

- **E106** Feed hopper for E102, E103, E105 moulds
- **E102-02** Large and small scrapper
- **E102-03** Glass plate 220x190x6 mm
- **S200-11** Straight edge