

# S224-01-KIT : Digital plate bearing equipment, 200 kN

**STANDARDS** : CNR N. 146 METHOD B, BS 1377:9, ASTM D1195, ASTM D1196, CNR N. 92

Digital plate bearing test equipment 200 kN capacity Three linear displacement transducers and Datatronic 7 acquisition system

Consisting of:

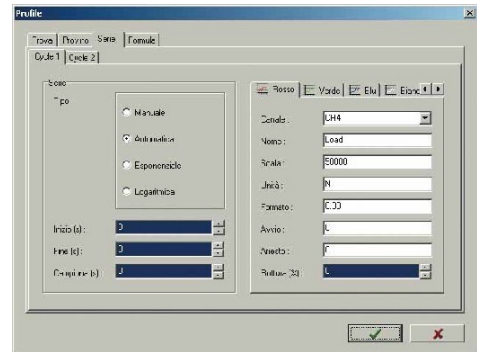
- **S225-01** Hydraulic jack 200 kN capacity, complete with hand pump, rubber pipe with fast connector, set of extension rods of different lengths, carrying case.
- **S226-13** Upper spherical seat.
- **C116-09S** Pressure transducer, connected to the pump.
- **C405-15N** Cyber-Plus evolution touch-screen for data acquisition, visualization, processing and storing, directly connected to PC or printer.
- **S224-21N** Software for test data processing
- **S226-05** Load plate Ø 300 mm.
- **S226-06** Intermediate plate Ø 160 mm.
- **S222-03** Datum bar assembly, 2.5 m long, telescopic, aluminium made, adjustable in height, complete with base supports, plumb and spirit level. Packed separately.
- **S336-14** n° 3 linear displacement transducers, 50 mm travel.
- **S336-31** n° 3 Extension cables for transducer, 5 m long.
- **S226-16** n° 3 articulated transducer supports with adjustment device.
- **S335-15** n° 3 universal coupling pliers for transducers.

**Weight:** 70 kg approx.



## Accessories for S224-01-KIT :

- **C116-09S** Pressure transducer
- **S224-21N** Test software
- **S336-14** Displacement transducer
- **S225-01** Hydraulic jack
- **S226-05** Loading plate Ø 300 mm
- **S226-06** Loading plate Ø 160 mm
- **S226-13** Upper spherical seat
- **S226-16** Articulated adjustable dial support
- **S335-15** Universal coupling pliers for Dial Gauge/Transducers
- **C405-15N** Cyber-plus 8 Evolution
- **S222-03** Bar
- **S336-31** Extension cable 5 m long



**S224-21N**



**S336-14**



**C405-15N**