

E181N and E183N : Compression and flexural machine 300/15 kN

STANDARDS: EN 196-1, EN 13286-41, EN 933-5, EN 1015-11 | ISO 679 | ASTM C109, C348, C349, C1194 | DIN 1164 | BS 4550 | GOST 26798-1

Compression and flexural testing machine High performance with dual testing chamber and two independent measuring ranges 300 kN and 15 kN with load cells, cyber-plus evolution control unit or Servo-plus evolution control unit.

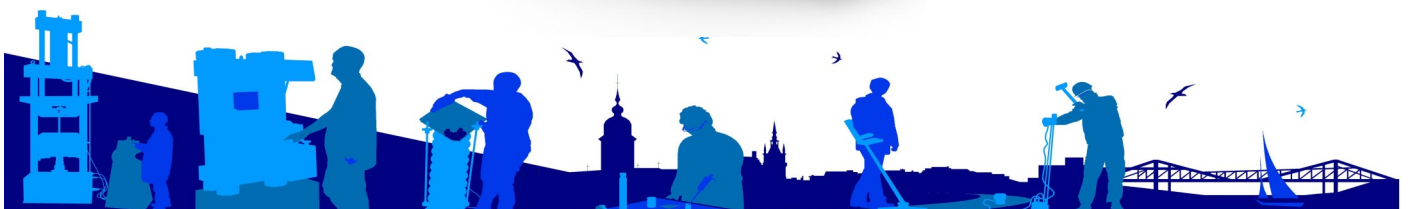
This testing machine is equipped with two load chambers with two independent measuring ranges. It is suitable to perform:

- Flexural tests on cement prisms 40,1x40x160 mm (with the range 0-15 kN)
- Compression tests on portions of prism 40,1x40x160 mm broken in flexure, cubes side 40, 50, 70, 100 mm 2", cores with max. height of 180 mm (with the range 0 - 250 kN) by using the suitable compression devices (accessories E170 - E172-01).

The applied load is measured by two strain gage load cells (15kN and 250kN) at high accuracy. This solution eliminates the weights of the piston and lower compression platen, packing set frictions etc., granting very high accuracy (max. error within +/- 0,5%).



**E181N or
E183N**



Specifications:

- Max. vertical daylight between platens: 189 mm
- Horizontal daylight between columns: 210 mm
- Platens diameter: 165 mm
- Ram travel: 35 mm approx
- Accuracy: Class 1 starting from 10% of the scale for both the ranges.
- Safety guards to CE Directive, polycarbonate made, with hinges.
- Supplied complete with lower compression platens and coupling pieces to easily fix the compression devices (see accessories).
- Dimensions of the frame: 1300x400xh1500 mm approx.
- Power supply: 230V 1ph 50Hz 750W
- Weight: 400 kg approx.

Compression / Flexural		Load measuring system	
Model	Dual range kN	Cyber-Plus Evolution Model C109N	Servo-Plus Evolution Model C104N
E181N	300/15	X	
E183N	300/15		X



Accessories for dual chamber machines :

E172-01 Flexure device for 40.1x40x160 mm mortar specimens. EN 1015-11, EN 196-1, EN/ISO 679



E172-01

E172-02 Flexure device for 40x40x160 mm mortar specimens. ASTM C348

E170 Compression device for prisms of prism 40.1x40x160 mm broken in flexure. EN 196, EN/ISO 679, ASTM C349



E170

E171 Compression device for cubes 50 mm and 2" side. ASTM C109, C1194



E171

E171-01 Compression device for cubes 70.7 mm side. BS 4550



E171-01

E171-01

E161-05 Distance piece, 50mm high

E161-06 Distance piece, 25mm high

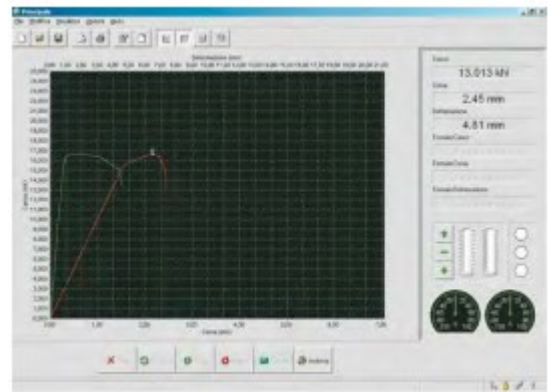
C127N Graphic printer on thermo-paper on board.

C127-11 Thermo-paper roll for printer (pack of 10 rolls)

E183-10 Safety guards complete with stop switch.

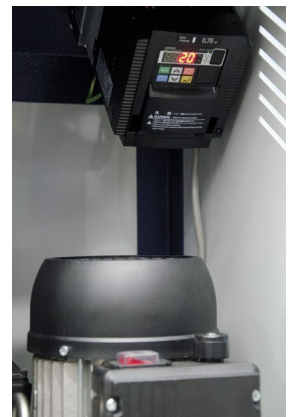
C097-05 Class 1, starting from 1% of the full range. With a special calibration procedure it is possible to grant Class 1 practically on the full range of the machine.

H009-01 Personal computer, LCD 22" monitor, keyboard, mouse, cables. The supply of the PC includes the installation of the software



C123N

C099N Inverter device granting a lot of improvements. Applicable only on Cyber-Plus and Servo-Plus Evolution machines.



Software	
C123N	SOFTWARE Servonet for remote control through PC only for Servo-Plus
E163N	SOFTWARE for compression tests
E164N	SOFTWARE for flexural tests

BAG-MacBen BV
Oostjachtpark 12,
B-9100 Sint-Niklaas

T: +32 3 771 48 04 info@macben.eu
www.macben.eu

BAG-MacBen
Smederijstraat 2,
NL-4814 DB Breda

T: +31 765 30 23 73 sales@macben.eu
www.macben.eu



07/2021